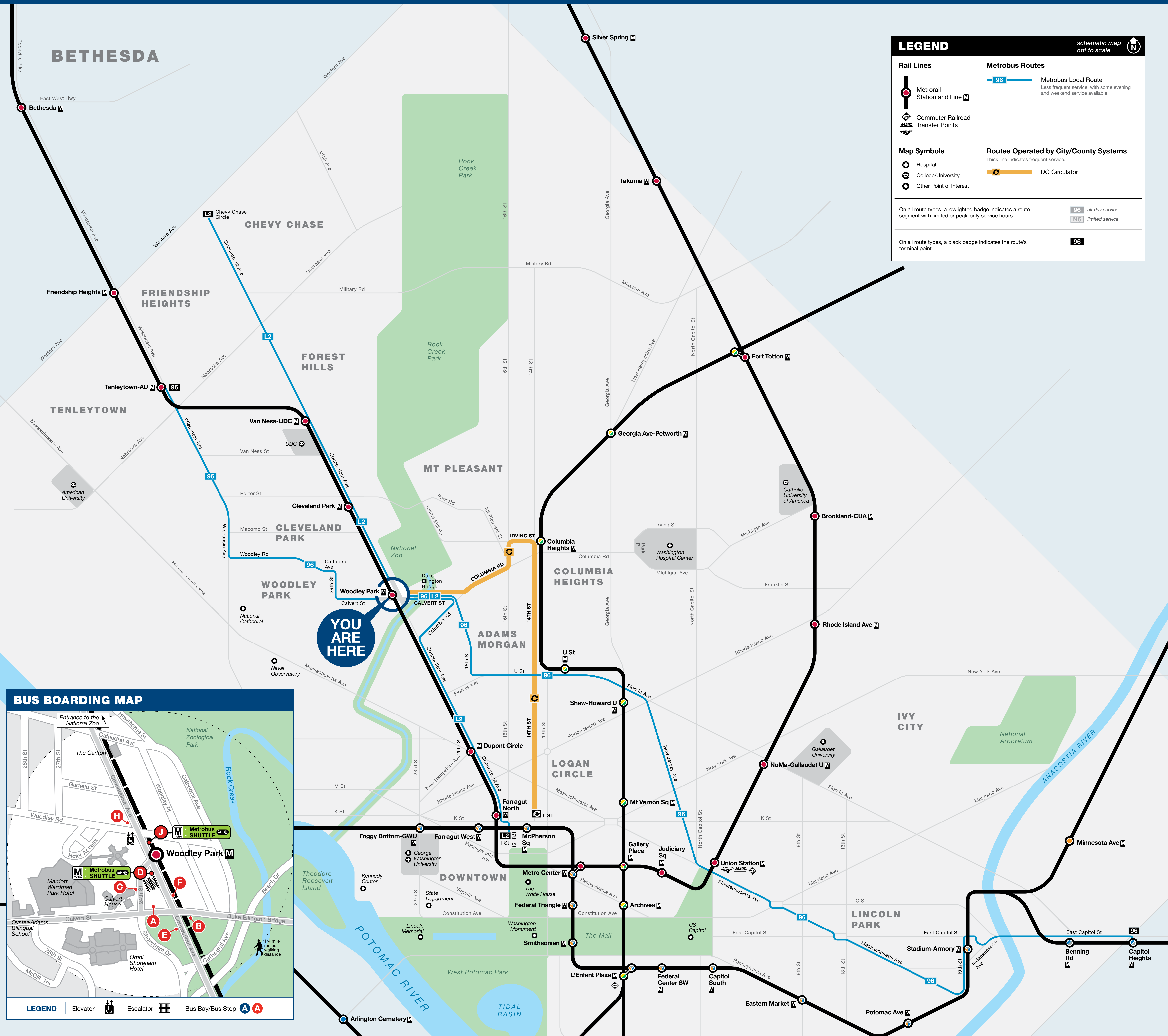




Bus Service from Woodley Park



BUS SERVICE AND BOARDING LOCATIONS

The table shows approximate time between buses in minutes; check schedules for full details

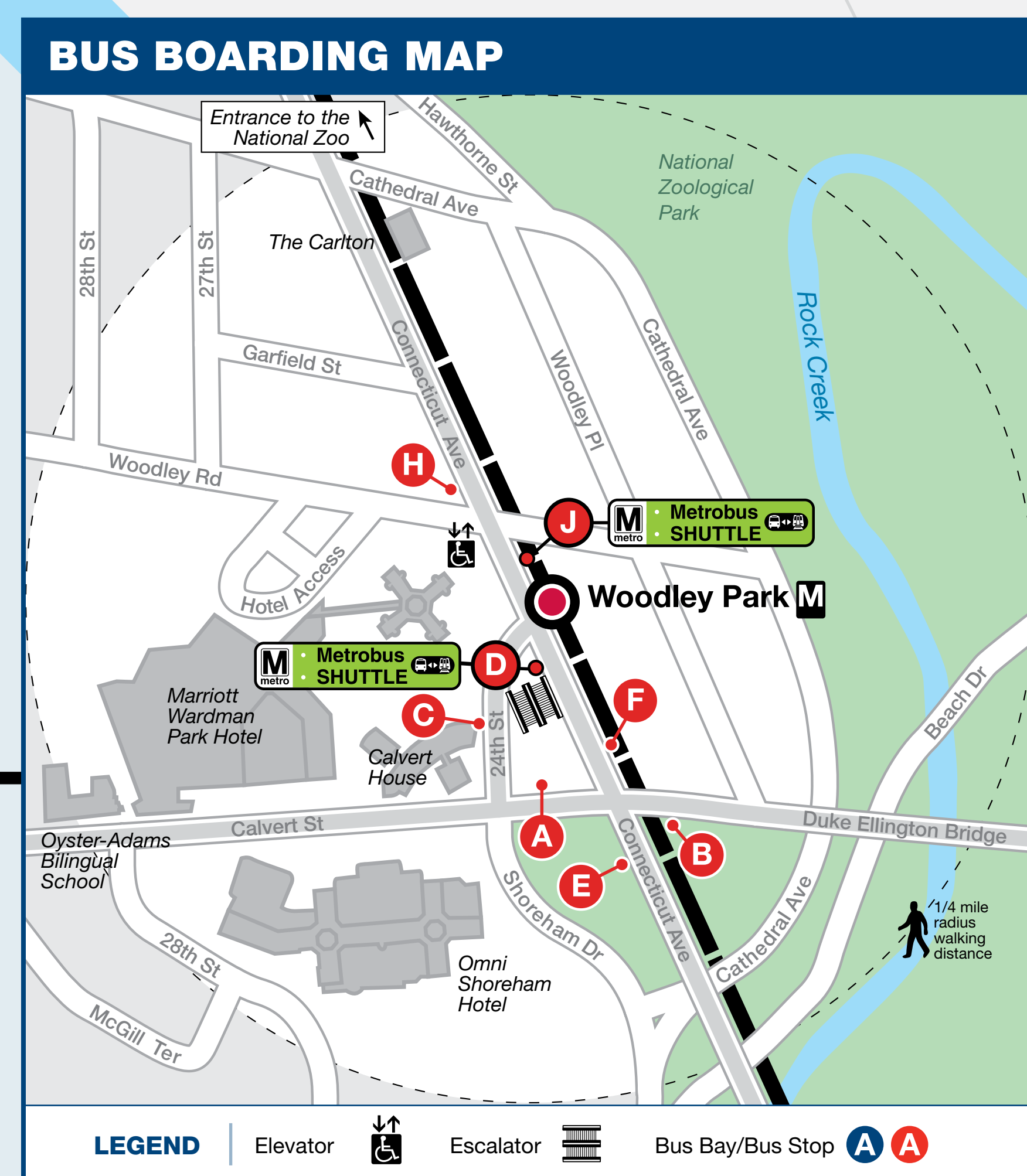
ROUTE	DESTINATION	BOARD AT BUS STOP	MONDAY TO FRIDAY				SATURDAY		SUNDAY	
			AM RUSH	MIDDAY	PM RUSH	EVENING	DAY	EVENING	DAY	EVENING
EAST CAPITOL ST-CARDOZO LINE										
96	Tenleytown-AU	A	20	24	24	30	30	30	30	30
96	Capitol Heights	B	20	24	24	24-30	30	30	30	30
CONNECTICUT AVENUE LINE										
L2	Farragut North/West	B, C, H	10-12	20	10	20-30	20	20-30	24-30	30
L2	Chevy Chase Circle	F, J	10	20	10	20-30	20	20-30	24-30	30
DC CIRCULATOR										
C	McPherson Sq	D	10	10	10	10	10	10	10	10

During track work and/or rail shutdown events, this bus stop will also be served by Metro shuttle buses.

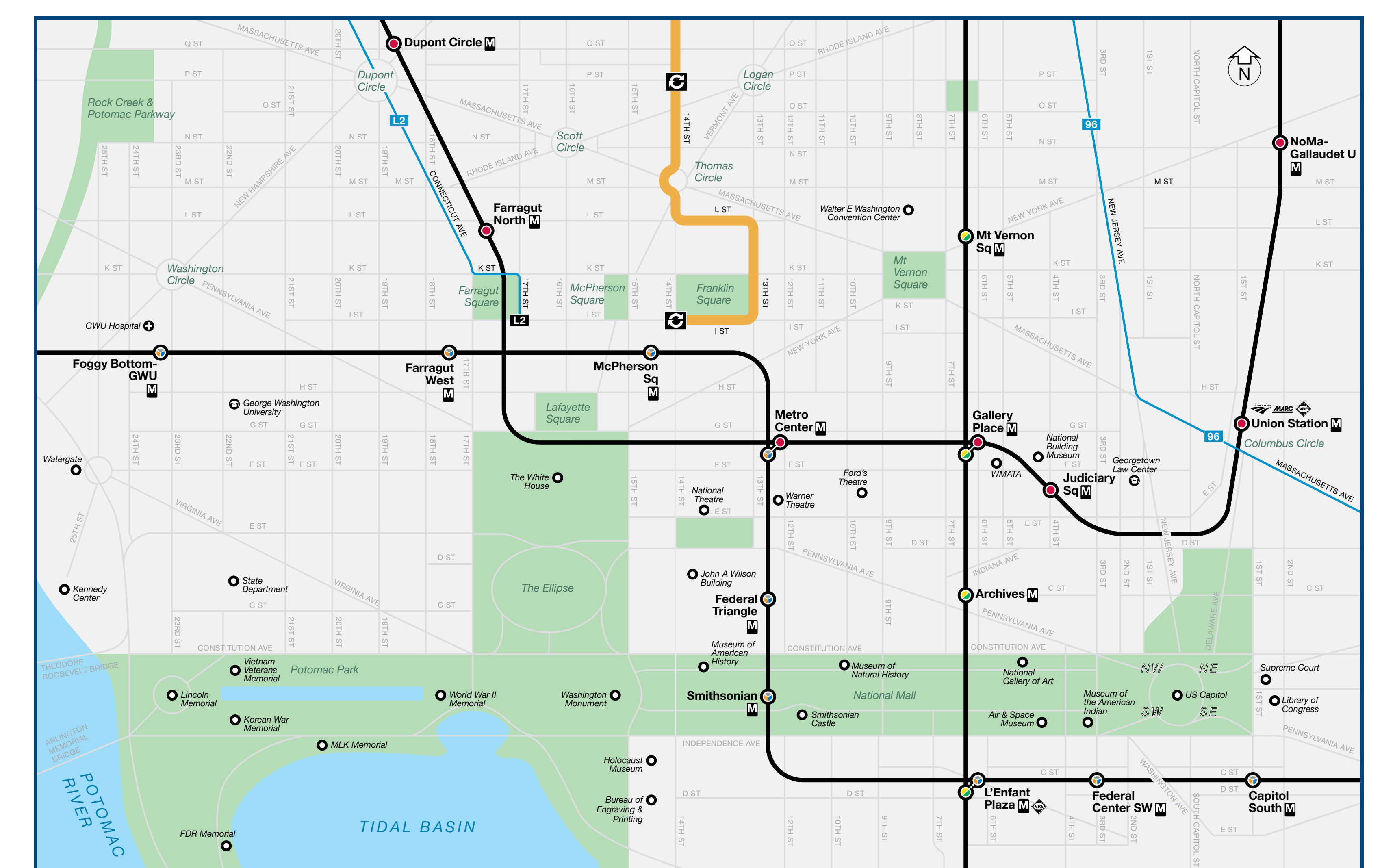
NOTE: The lettered red discs in the table and on the boarding map identify bus stops near this station. The letters ARE NOT displayed at the actual bus stops.

Through MetroAlerts, you can be notified of Metro service disruptions via email or text messages. MetroAlerts can be sent to computers, cellular phones, pagers or personal digital assistants capable of receiving data. MetroAlerts are limited to 140 characters to prevent them from being truncated when received as text messages. If further information on the incident is available, it is published on the website and a link to that information is included in the MetroAlert.

KNOW MORE. KNOW FIRST.
Sign up today at wmata.com/MetroAlerts



CENTRAL WASHINGTON DC



Bus service is subject to change. Check wmata.com for updates.

September 2021

information wmata.com | 202-637-7000 | 202-638-3780

busETA and General Inquiries

Para busETA y información general, llame al 202-637-7000 (TTY 202-638-3780) o visite wmata.com.

정보나 busETA 또는 언어 지원 관련 문의는 202-637-7000 (TTY 202-638-3780) 으로 전화하십시오. 스피어 관련 문의는 T를 누르고, 기타 언어 관련 문의는 888을 누른 후 5를 누르십시오. 또는 wmata.com 을 방문하십시오.

Sign up today at wmata.com/MetroAlerts

Metro is accessible.
Metro es accesible.
메트로는 접속 가능합니다.

